

# Table of Contents

**Chapter 12: iPad and Two-Up Page Design** ..... 3



# Chapter 12: iPad and Two-Up Page Design

## Two-Up Page Design

By default, new layouts use a split-page design:



iPad Screen Layout

You may choose one page for the left side, and a different page (or even the same page) for the right side. As noted, you may switch pages with the page tabs (8).

In addition, you may select a different bank for the each side using the bank selectors (9). To see all topics related to page banks, [see here](#).

Users' opinions are split of their love for the two-up page design.

About half of the MIDI Designer Master Layout creators (like popup, fdesnoyers, planshifter, landschall and EZB, to name just a few) rely on it, because they can mix and match pieces of their layout.

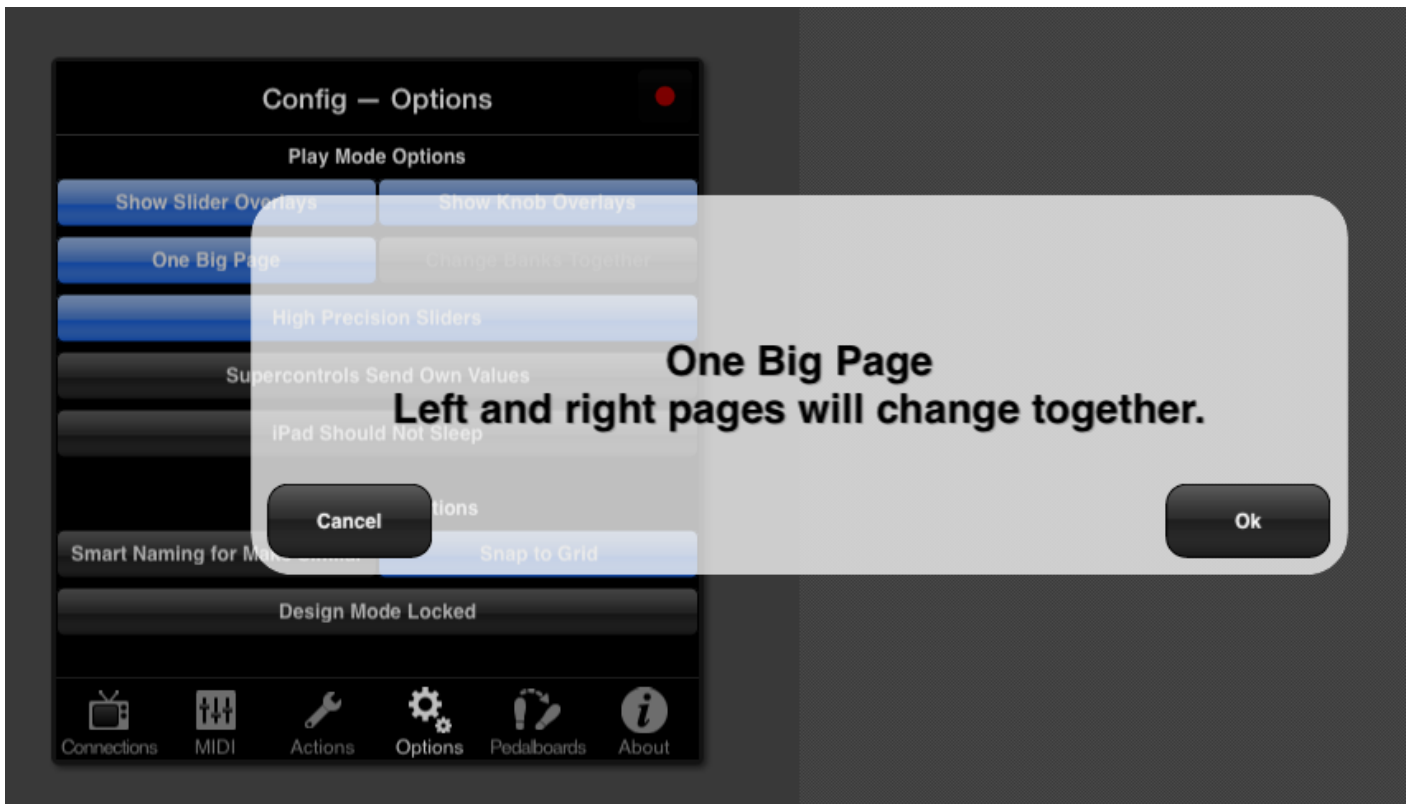
The other half use *One Big Page*.

## One Big Page

*Config* → *Options* → *One Big Page* (toggle)

One Big Page allows you to experience your layout as a set of unified pages spanning the width of your iPad screen. Choose a different Page Bank for the left and right sides, and then turn on One Big Page.

You must display a different bank on the right and left sides. Otherwise, you'll be seeing the same page on the right and left side!



One Big Page Confirmation

Dynamic controls may span the entire width of your layout. To achieve this:

1. Put the control on the left side
2. Extend it to the right side by using the sizing handles

If you adjust page background texture and color on either side, that color will affect the page on both sides of the layout. ⚠️ LED color changes only affect the left or right page that is selected.



To move controls from page to page, you might have to shut One Big Page off temporarily.

## Change Banks Together

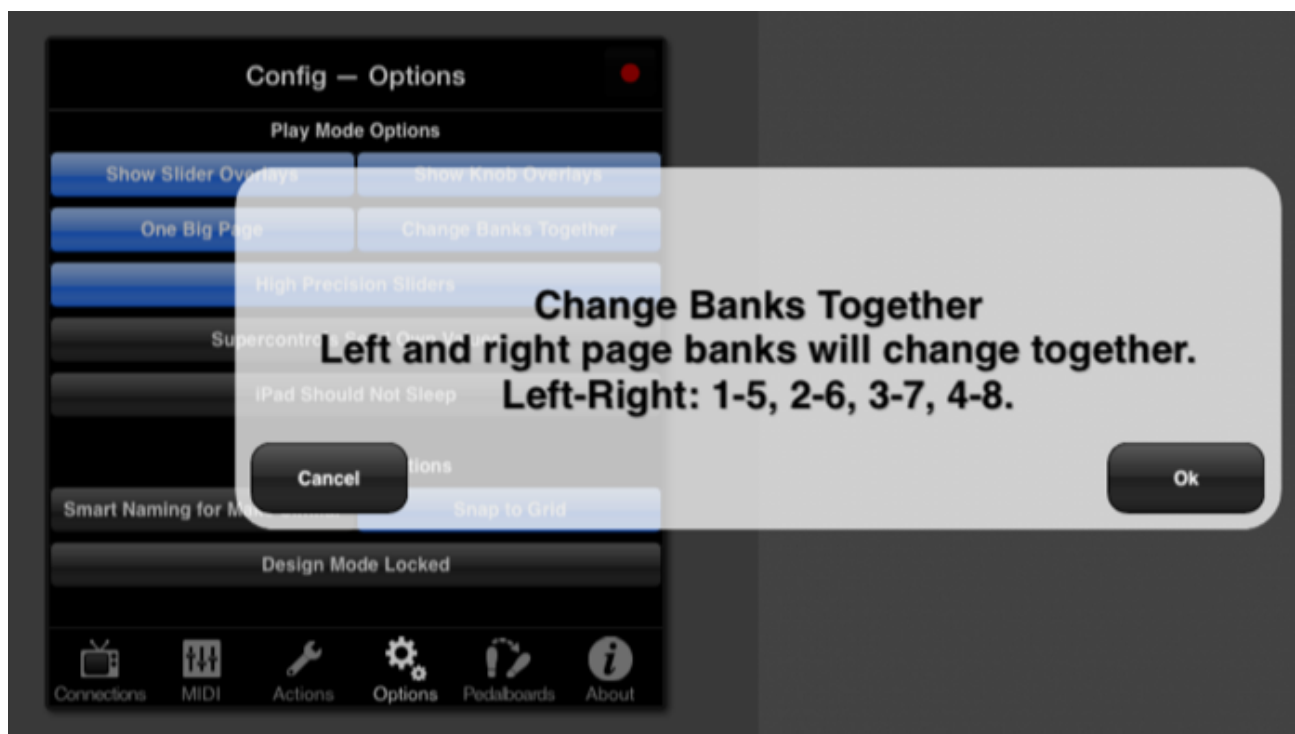
*Config* → *Options* → *Change Banks Together*

This feature is also known as *One Big Bank*.



This feature requires One Big Page being set to ON

*Change Banks Together* allows you to move through banks on the right and left side of your rig at the same time. When you turn the feature on, MD will explain how the banks will change:



Change Banks Together Confirmation

*Banks Change Together* links the following banks together, left and right: 1-5, 2-6, 3-7, 4-8.

⚠ You can only change the number of banks available on the left side using *Change Banks Together*.

## Move Banks

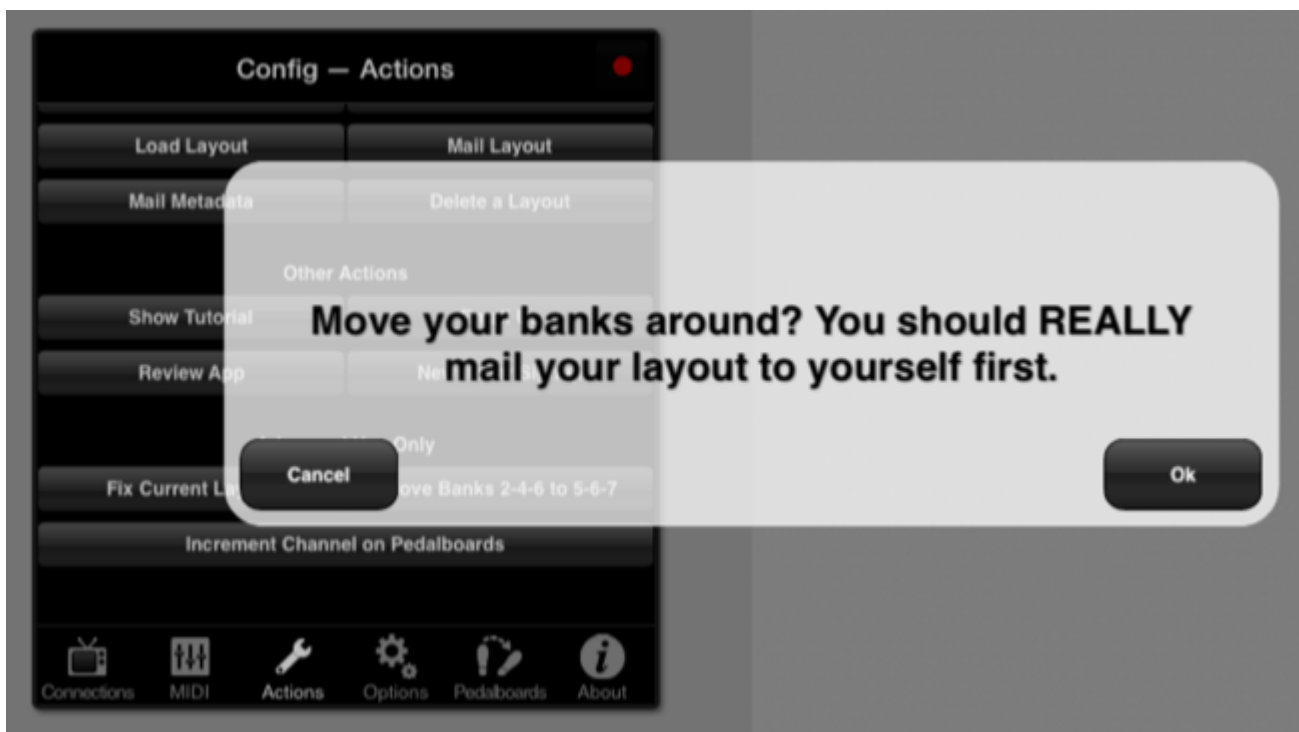
*Config* → *Actions* → *Move Banks 2-4-6 to 5-6-7* Users who have been using *One Big Page* for some time and decide to use *Change Banks Together* are oftentimes surprised to find that they've used these banks for *One Big Page*:

Left Side	Right Side
1	2
3	4
5	6

while *Change Banks Together* requires these banks:

Left Side	Right Side
1	5
2	6
3	7

You can automatically switch your layout to this new configuration via *Move Banks 2-4-6 to 5-6-7*. You will be given this prompt:



Confirmation to Move Banks

From: <https://www.mididesigner.com/wiki/> - MIDI Designer Reference Manual

Permanent link: [https://www.mididesigner.com/wiki/doku.php/manual:12\\_advanced\\_page\\_concepts?rev=1695911830](https://www.mididesigner.com/wiki/doku.php/manual:12_advanced_page_concepts?rev=1695911830)

Last update: 2026/05/01 12:11

